

## What's On News

Welcome to the first edition of 2009 and a very Happy New Year to you all.

- HVA December minutes – *click here for details*
- Mill Cottage News
- **Jan 31<sup>st</sup> Sat** – Alton Beer Festival
- **Feb 14<sup>th</sup> Sat** – Grand Charity Valentine Dinner
- **Feb 26<sup>th</sup> Thurs** – Dowdy to Diva, Treloar Trust fashion show – *click here for details*
- A Wonderful Christmas Warm-up at The Maltings
- Seasonal Green Tips from Holybourne & Alton Greening Campaign
- Alton Events

### Mill Cottage News

The breeding programmes are all lined up ready for our **Open Day on Easter Monday 13th April at the Holybourne Theatre**. We are awaiting the arrival, any moment, of piglets via Faith, Hope and Charity, our three breeding sows.....they should arrive before the next "What's On"! The sheep should lamb in the middle of March followed by the goats kidding at the beginning of April. The animals haven't read the book though, so we are expecting the next few months to get busier, whenever they decide to give birth!

More details will follow for the Open Day, which is being planned at this very moment!

Meanwhile, there is a growing group of Holybourne Ladies (at present about 20 names are on the list!) who are about to tackle the Hangars Way, a 21 mile stretch from Queen Elizabeth Country Park, Petersfield to Alton Station. If anyone would like to join us, please contact me with your email address so that we can keep you in touch with the details. Whilst enjoying ourselves and gaining blisters, we would also like to take the opportunity to raise money for Breakthrough Breast Cancer - our 'justgiving' site can be found at [www.justgiving.com/holybourneladies](http://www.justgiving.com/holybourneladies) Please give what you can to this worthy cause. You can also see who has signed up to walk.... I am sure we could all do with your support!!

**Sarah & Tom** [www.mcfe.org.uk](http://www.mcfe.org.uk) **01420 86206**

### Alton Winter Beer Festival

At the Alton Malting Centre on the 31<sup>st</sup> January, 60 real ales plus cider and English wines.

There are two sessions, lunch 11 to 3pm and evening 7 to 11pm. Entrance is by ticket only and are £6 each that includes a festival glass and programme and as usual all beers are £2 a pint. You can help us be environmentally friendly and bring one of your old festival glasses and get a free half pint. Tickets are on sale at the Railway Arms in Alton and at the Malting Centre in Alton, or by post via the website [www.altonbeerfestival.co.uk](http://www.altonbeerfestival.co.uk) Tickets are as usual selling fast, so it looks like it will once again be a sell-out, so please get your tickets now rather than later,

Last year we raised over £12,000 for local charities, check out the website for local charities who benefited from previous festivals.

**Ysanne and Peter Legg**  
**Organisers for the ABF**

Sponsored by -  
<http://www.mintcondition.net>  
01420 590590



## **Grand Charity Valentine Dinner**

Saturday 14th February 2009 - Have the most sharing, caring Valentine ever at historic Neatham Mill.

The evening will start with a drinks reception when we will be entertained by members of the Susuki School of Music. Dinner will be four courses and Sarah Garwood has offered her services to cook.

Diners will be entertained by two members of 'Beatroute', We will provide a pay bar serving award winning Triple fff real ale, lager, wines and soft drinks.

A brief description of the meal is outlined below; a form with more information will be available when tickets have been booked. Book early to avoid disappointment (10 sets of tickets have already gone!).

**Starters:** Parcels of smoked trout wrapped around with smoked salmon OR Warm artichoke with toasted goat cheese and thyme

**Mains:** Roast venison with sloe gin and blackberry sauce OR Julienne of duck breast with kumquat and brandy OR Ricotta, pine nut and broccoli crackers

**Sweet:** Passion fruit mousse with cassis and strawberry coulis OR Heart of dark chocolate mousse with a coffee bean sauce OR A selection of cheese and biscuits

Only 30 pairs of tickets are available for this romantic evening. Tickets will be allocated on a first come first served basis. Money raised will be donated to The Education and Book Appeal: Ghana (TEABAG). This will go towards the salary of the Vocational Skills Centre Administrator. Also to Holybourne Cricket Club and Holybourne Guides.

If you would like to apply for tickets (Tickets are £30 per person) please email me at [tom@tomyendell.co.uk](mailto:tom@tomyendell.co.uk) <mailto:[tom@tomyendell.co.uk](mailto:tom@tomyendell.co.uk)> or telephone 01420 80560. Tables will be for two people only unless you request otherwise.

Tom Yendell

## **A WONDERFUL CHRISTMAS WARM-UP**

The Alton Maltings, looking rustically festive, was filled to capacity on Saturday 20<sup>th</sup> December when three musical groups combined to recreate 'The Wonder of Christmas', a charity concert in aid of Home-Start and the Harvest Church Youth. Alton Concert Orchestra, under David Budd, Alton Choral Society with their new Conductor, Christopher Gardner and Mac Newton's Ancora Female Voice Choir, ably abetted by Tanya Holmes-Jefferd's accompaniments, put together a varied, entertaining programme, including a healthy tranche of audience participation.



Leroy Anderson's 'Sleigh Ride' made a lively start to the proceedings, and the excellent Orchestra bore the brunt of the evening's work, accompanying carols as well as giving enjoyable performances including 'Finlandia' (suitably dramatic) and 'Winter Wonderland' (engagingly laid-back). Anne Bradley bravely exchanged her trombone for the conductor's baton for the atmospheric 'Dream Pantomime' from 'Hansel and Gretel'.

Sponsored by -  
<http://www.mintcondition.net>  
01420 590590



There was no less variety in the carols we heard: there were exciting accounts of Mathias's 'Sir Christemas' and Britten's 'Wolcum Yole' from the Choral Society, and of 'Gaudete' from Ancora. Particularly effective too, were 'Bethlehem Down', where the crystal clear diction helped convey the carol's poignancy, Malcolm Williamson's 'This Christmas Night', wending its way seamlessly through distant keys, and Britten's 'There is no Rose', where Ancora, with harp accompaniment, captured the carol's hypnotic quality beautifully.

For many of the audience, however, the highlight of the evening was their own, unexpected participation. Christopher Gardner has the good fortune to be the son of composer John Gardner, and he soon had the audience under his jocular thumb as he cajoled them into learning some of his father's carols. Whilst the Choirs sang 'I saw three ships', the audience added 'What shall we do with the drunken sailor?' in lusty counterpoint; and as a finale, they managed a three-part canon for 'The Holly and the Ivy'! It was an evening greatly enjoyed by all, and both the music and the splendid mulled wine and mince pies inspired generous donations amounting to £1,513.00 to go directly to the charities Homestart and the Harvest Church youth groups, to support their work for the families of Alton

**More details regarding the Press Release: Sarah Main, Publicity Officer,  
Alton Concert Orchestra      01420 86206      sarahbmain@yahoo.co.uk**

## **SEASONAL GREEN TIPS**

The Greening Alton & Holybourne Campaign members have come up with four very seasonal tips to create a warm glow in the depth of winter: 1) wrap up the house, 2) dig a vegetable plot, 3) clear out clutter and 4) put carrier bags in the car, ready for the next shopping trip. Each of these 'green tips' reflects their new plans to initiate community projects that we can all get involved in, if we wish.

Chris Chappell is devoted to the idea of a warmer home and is exploring how we can best do this without wasting good heat and good money. Her seasonal green tip is to peep outside on the next frosty day and check how white your roof is, compared to neighbours' homes. If the frost has disappeared quickly, you probably need more loft insulation- the most effective way to reduce fuel bills. Grants are available and some people can have free insulation. Just call East Hants District Council to find out what help you can get.

Committee member Penney Hames, has a passion for local food and she was interested to see that our local gardening expert, Geoff Hawkins starts a new course on 'Growing your own fruit and vegetables' at the Alton Community Centre over four Wednesday evenings, starting January 28<sup>th</sup> at 7.30pm. Geoff will cover ground preparation, choosing what to grow, crop rotation, ensuring produce to eat throughout the season and a guide to seed catalogues. For course information and booking tel 01420 85057.

Committee member Bill Jabelman feels strongly about plastic bags and last month the government agreed with the 7 largest supermarkets to cut their use by half, by this Spring 2009. He is already on the case in finding out how our own local stores (Sainsbury's, M&S, Tesco and Co-op) are doing and asks that we all do our bit and get into the routine of taking bags with us when we go shopping. He says 'don't forget you can buy compostable bags from the Co-op and all the stores offer their own bag-for-life.

Last but not least, Jerry Cullum, Chair of the local campaign is set on encouraging us all to have a good clear out. He is planning a grand garage sale day in the Spring and this message is in tune with the latest ideas in home make-overs. The designers are saying 'you may not really need to extend your home or spend a fortune on updating it: just take everything out of one room and only put back what looks good. Give the rest away'. And if it looks bare, come to Jerry's garage sale day to buy a well-loved treasure from someone else.



Members of the Greening Campaign reckon there could be an army of volunteers who may like to help in a small way to make these community projects a reality and support everyone in Alton & Holybourne. Jerry says 'don't be shy; it doesn't matter what you know or don't know about climate change. All that matters is that you are keen to help- we'd love to meet you and pool our energies'. Contact Chris Chappell, secretary, tel 01420 544422 or e mail [greening.alton@hotmail.co.uk](mailto:greening.alton@hotmail.co.uk)

Geoff Hawkins new course 'Grow Your Own Vegetables and Fruit' starts Wed January 28<sup>th</sup> 7.30pm at Alton Community Centre. Tel 01420 85057.

Sponsored by -  
<http://www.mintcondition.net>  
01420 590590



## **Alton Events**

### **FebEx2009 Model Railway Show**

Saturday 7 and Sunday 8 February 2009, 10.30am to 5.00pm. Eggars School, Alton.

Alton Model Railway Group presents its biggest model railway exhibition yet, with a wide variety of traders and layouts from all over the South of England.

[More on FebEx2009](#)

### **Ivor the Engine**

14-22 February 2009. The Watercress Line.

Based on the stories and TV series by Oliver Postgate & Peter Firmin, this new event on The Watercress Line includes rides behind Ivor, childrens entertainment and much more.

More on Ivor the Engine

For more events and information on the above events visit <http://www.altonevents.co.uk/>

Also for other events visit <http://www.ctalton.co.uk>

Sponsored by -  
<http://www.mintcondition.net>  
01420 590590





**Minutes of Committee Meeting held on 9<sup>th</sup> December 2008 at Holybourne Village Hall**

Present: Karen Bennett (KB) – Chairman      Phil Croucher (PC)      Ben Kemp (BK)  
David Godfrey (DG) – Secretary      James Bull (JB)      John Honnor (JH)  
Vickie Kemp (VK) – Treasurer      Barrie Lawrence (BL)      Glynis Watts (GW)  
Nick Cane (NC)      David Tomlinson (DT)      Steve Downes (SD)

**1. Opening of Meeting**

The meeting opened at 20-08 hrs.

**2. Apologies for Absence**

Apologies for absence were received from:- Vernon Burford (VB), Lynn Kelly (LK), Andy Maddock (AM), David Willoughby (DW), Pat Lerew (PL) and Tom Yendell (TY).

Jerry Janes was unable to attend.

**3. Minutes of November 2008 Meeting**

Agree minutes of November 2008 meeting.

The minutes of the meeting were approved.

Matters arising from the minutes.

Item 5.2 NC advised that white bread is detrimental to the wildfowl and he will arrange for notices to be placed in the immediate area of the pond.

Signing of the minutes.

The minutes were signed by KB Chairman.

**4. Judging of Christmas Tree Presents**

The committee judged the entries submitted by the children from Andrews Endowed School. Five prizes were awarded after much deliberation, due to the very high standards. KB will arrange for the prizes to be delivered to the school and for the beautifully wrapped presents to be placed on the Village Christmas Tree.

**5. Neighbourhood Watch**

Once again the local police had failed to attend and advise how these schemes work.

SD stated he would contact the station officer in charge and arrange for a speaker to attend the January meeting.

**6. SHIFT**

NC advised that the SHIFT report was in hand and would be presented to the committee shortly.

Alton Town Partnership (ATP) will be holding an open meeting/presentation on the 28<sup>th</sup> February 2009 between 10-00am & 2-00pm. The agenda will include items such as The Core Strategy, The Governments New Target for Alton and where new houses may be built.

The meeting is to be held at the Alton Community Centre. It would be helpful for as many members of the committee to attend this meeting. The outline of the future effects on Alton and Holybourne's growth plans will be on show.

**7. Friends of the Pond Update**

The committee wished to thank the owner of the property located adjacent to the pond for the splendid Owl carving recently carried out on one of their dying boundary trees. Those visiting the pond would benefit from this added attraction.

## **8. Planning and Development**

One minor application had been lodged with EHDC during the period.

GW advised that the proposed A31 Petrol Station Development team had arranged a meeting with the EHDC Planners prior to Christmas.

GW advised that the HVA would be contacted by the development team in the New Year.

## **9. HVA Members Open Forum (note that items for the open forum may be time limited by the Chairman)**

BL advised that the Village Magazine would be distributed by the end of the second week in December.

JH had noted that the new Linden Homes Development in London Road had recently laid new tarmacadam footpaths. With the recent frosty mornings, these paths were very dangerous to negotiate. GW advised that she would raise the matter with EHDC and Highways.

It was noted that several trees had been felled behind the new houses at the bottom of Howard's Lane; it was thought that these trees did not carry TPO's.

An elderly resident in Thornton End had requested assistance from the committee regarding a large tree to the rear of her home that had now almost entirely blocked out the light from her lounge and kitchen. The committee would look at ways they may be able to help.

DG advised the meeting that the Countryside Service Recreation & Heritage Department have confirmed that the work required to bring the section of public footpath between Howard's Lane and Anstey Park back into good repair is to be dealt with as a priority. The contract to resurface this route has been awarded to a contractor and scheduled to commence shortly.

## **10. Treasurers Report**

VK wished to thank the Webmaster, Dave Budd for the advertising space that he had sold on the Village Website.

VK advised that the Christmas tree had been paid for and that arrangements were in hand for the proceeds (part) from the Fun Day to be sent to the Hampshire Air Ambulance Fund.

## **11. Greater Alton Project**

The Rev'd James Croft had contacted the HVA to report that all Anglican Churches and the Methodist Church have unanimously agreed to the proposal to form a single Anglican Parish in covenant with the Methodist Church in order to engage together in mission and ministry. James would further advise the HVA of progress during 2009.

## **12. Any Other Business**

A new resident in Howard's Lane had raised concerns regarding the high volume of traffic using this road. NC stated he would ask HCC if any traffic calming schemes could be placed in the area / village generally. Traffic levels have become noticeably heavier in the village as a result of new developments and Treloars insistence in using Howard's Lane, as against their main entrance.

The carol singing event will commence at 7-00pm outside the White Hart public house Tuesday 16<sup>th</sup> December.

The Christmas tree will be decorated Wednesday 10<sup>th</sup> December.

## **13. Date of next Meeting**

Date of the next HVA Meeting, Tuesday 13<sup>th</sup> January 2009.

## **14. Close of Meeting**

- 14.1 The meeting closed at 21-00 hrs. Everyone is wished a very happy Christmas and a very happy and prosperous New Year.

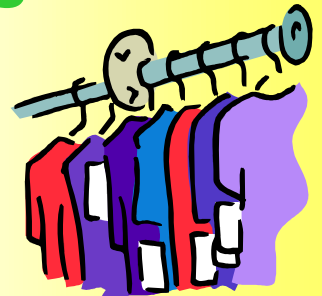
# "DOWDY TO DIVA"

## FASHION SHOW

including various stalls and  
pampering sessions

in aid of Treloar Trust

on



**Thursday 26 February 2008**

7pm for 7.30pm start

at Treloar School, Upper Froyle

Tickets to include wine and canapés £15

For further details please contact Fiona or Wendy

on 01420 526511/523 or

**email: [events@treloar.org.uk](mailto:events@treloar.org.uk)**

**[www.treloar.org.uk](http://www.treloar.org.uk)**



Registered Charity No. 1092857